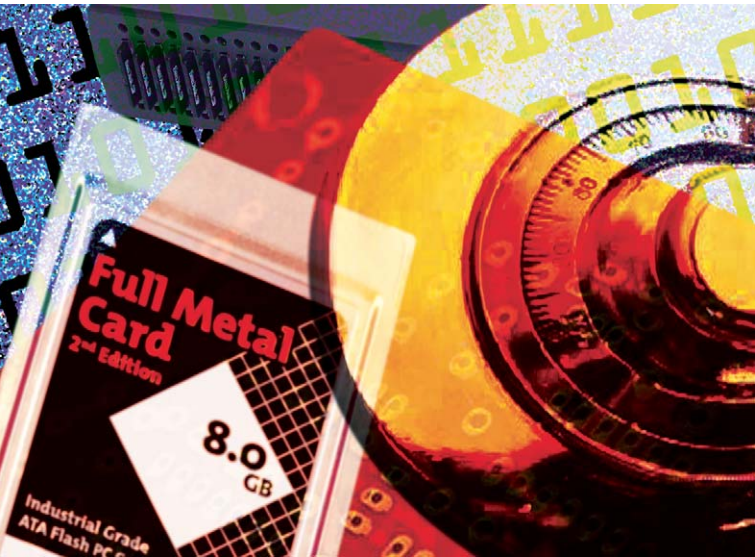




# Specialist for Storage ..... Technology



## Pocket Guide english 2005/06

**CopyStations  
Services**

**Industrial Grade  
Flash Storage Products**

**Solid State Disks  
Flash Card Drives**

altec – your specialist for storage technology.

We develop high-tech products and custom solutions – just give us a call.

## International sales

Phone: +49-511-9 83 81-61  
 Fax: +49-511-9 83 81-49  
 eMail: [info@altec-cs.com](mailto:info@altec-cs.com)

## Technical support

Phone: +49-511-9 83 81-70  
 Monday to Friday from 11 am to 3 pm CET  
 eMail: [support@altec-cs.com](mailto:support@altec-cs.com)

## Office hours

Monday to Friday from 8 am to 6 pm CET  
 and round-the-clock at  
[www.altec-cs.com](http://www.altec-cs.com)

## Price list download

Please register at our homepage for the price list download section  
[www.altec-cs.com/web/h\\_en/preise/register/index.htm](http://www.altec-cs.com/web/h_en/preise/register/index.htm)

## Special offers

See [www.altec-cs.com/web/h\\_en/preise/restpo/index.htm](http://www.altec-cs.com/web/h_en/preise/restpo/index.htm) for information on current special offers

## Table of contents

	Page
<b>About our company / Service</b>	4–6
<b>CopyStations</b>	
◆ information	7–8
◆ products	8–9
<b>Memory card services</b>	10
<b>Custom developments</b>	11
<b>Flash storage technology</b>	12–13
<b>PC Cards</b>	
◆ information	14
◆ products	14–17
<b>CompactFlash Cards</b>	
◆ information	18
◆ products	19
<b>Solid State Disks</b>	
◆ information	20
◆ products	21–30
<b>Flash Card Drives</b>	
◆ information	31
◆ products	32–35
<b>Software</b>	36
<b>SanDisk Consumer/OEM products</b>	36
<b>Index</b>	38

The right is reserved to change specifications without prior notice.  
 All trademarks mentioned are the property of the respective owners.

© 2005 altec ComputerSysteme GmbH. Version >e5,0< >08/05< >1200<

**Founded in 1986**, altec has been making a name for itself with innovative technical solutions ever since. Following the boom in computers, altec's activities soon focused on the field of digital electronics. The former altec electronic GmbH was renamed to altec ComputerSysteme GmbH in 1992 and the company now concentrates on the **development** and **marketing** of **flash memory technologies** and **Solid State Disks**.



This sector has expanded continuously, and nowadays development work represents a large part of our business activities. altec now sells an **extensive range** of Flash Card products, Flash Card drives, Solid State Disks, CopyStations and provides CopyServices. From the development of customer-specified solutions for a wide range of applications through to technical support of turnkey industrial grade hardware and software systems, our engineers are ready to help you in all phases of system integration. In other words, we provide an **comprehensive technical support and design service** directly from the manufacturer.

## Product range

### ◆ CopyStations & Services

altec offers four products for duplicating the content of your memory cards: the fully automated **Robo CopyStation**, the **High-Speed CopyStation** with exchangeable CardBoxes for 20 memory cards, each, the well-priced **FlashCard CopyStation** with 10 PC Card slots and the **FlashCard CopyStation Mobile USB** with 2 PC Card slots.



We offer **services relating to almost all aspects of mobile memory cards**. E.g. duplication of card images, individualisation of cards, labels and blisters to customer requirements.

### ◆ Solid State Disks

Our product range relating to Solid State Disks extends from **CompactFlash to IDE** adapters through **FlashDrives** from altec, Memtech

and Silicon Systems to the altec **Full Metal Stick USB**. We are sole distributors in Germany, Austria and Switzerland for solid state drives from **Memtech**. And we are the exclusive distributor in Germany for the SiliconDrive™ product range from **SiliconSystems**.

### ◆ Flash Card Drives

Our Flash Card Drives allow Flash memory media to be used for mobile data storage with nearly any type of computer – whether desktop PC or industrial computer – and **guarantee rapid and easy data exchange**. We have realised a large number of customised versions, which are successfully in use.



### ◆ Flash Memory Cards

altec has started selling the **SiliconDrive™ products** in the 2nd quarter 2005. With this altec offers the currently most technologically advanced Industrial Grade storage solutions. A separate brochure (see p. 37) is available for **Consumer/OEM products from SanDisk**.

Where demands on storage media are toughest, our continuously improved **Full Metal Cards** have been proving themselves for years. The new 2<sup>nd</sup> Edition product family is based on the SiliconDrive™ memory technology.



## Applications

Our products have a **very wide range of applications**, including road transport and medical technology, production engineering, telecommunications, measurement systems, environmental engineering, aerospace (MIL technology) and all kinds of mobile applications such as mobile phones, digital cameras and data acquisition devices.

## Global presence

Strategic alliances, **sales offices** and **production sites** throughout **Europe** and in the **USA** have ensured an international market presence which is effective both for us and for our customers. Numerous well-known international companies trust us to market their entire product range.

## Guaranteed: service and quality

### ◆ From 24 months to 8 years warranty

We trust the quality and performance of our products, and so we give a minimum of 24 months warranty on all components and complete systems from altec ComputerSysteme GmbH.

### ◆ ISO 9001:2000 certification

In January 2005 altec ComputerSysteme GmbH has obtained an ISO 9001:2000 certificate attesting successful implementation of a quality management system. The certificate applies to the development and sales of memory technology and solutions and associated services.

### ◆ Test certificates for our products

Products from altec ComputerSysteme GmbH meet the European Union (EU) regulations for electromagnetic compatibility (EMC). The EMC testing and CE certification of our products is carried out by an independent, approved EMC testing laboratory.

### ◆ Membership in organizations for standardization

altec is a member of the relevant international organizations for standardization such as the SD Card Association. The aim of our membership in this committee is to actively participate in the development and standardization of new technologies, and in particular to apply our know-how and experience to the development of new SD Card applications.

### ◆ Service hotline

When you buy an altec product, you are automatically assured the best possible service. We can give you individual advice on compatibility and configuration and our support specialists can give you qualified assistance on our entire product range.

### ◆ Service packages and service tools

Our optional service packages give you additional product security. You can choose from a range of modular service packages and service tools which are specifically tailored to your requirements. Our sales department can prepare a quotation to meet your needs.

## Duplication, verification and modification of data

altec has a suitable product for copying data images to flash memory media for nearly all applications, and is a **worldwide technological leader** in this sector.

Our systems are used by manufacturers of flash memory media for quality control and to **verify and modify the data** which is stored. Our flexible and high-performance hardware design with VHDL technology consisting of 21 FPGA and the copying software which we developed in-house allows us to make custom modifications for **special applications**. Don't hesitate to ask our specialists if you have any special needs.



## First fully automated copying station worldwide

Based on our existing copying stations we have developed the first portal robot for automatic handling and duplicating of memory cards. The **Robo CopyStation M1** currently allows to copy 20 SD Cards or MMCs in parallel.

The next generation M2 will be capable of **duplicating 48 cards in a single operation** and supports SD Card & MMC, miniSD, microSD and RS-MMC. A throughput of approximately 3400 cards per hour can be achieved with 64 MB SD Cards.



Due to the large production quantities the Robo CopyStation is an ideal solution for manufacturers of smart phones, mobile gaming consoles, navigation systems and PDAs. Other providers of content on memory media such as music can

also benefit from a **significant cost reduction per copied memory card** when the Robo CopyStation is used to capacity.

## Our flexible high-speed solution

The **High-Speed CopyStation** uses a very flexible hardware design which allows high-speed image copying to the following flash

# CopyStations



memory media such as **SD Card** and **MultiMedia-Card, CompactFlash Card, miniSD, RS-MMC** and **OTP (One Time Programmable) SD & MMC Cards**. Card-Boxes for Memory Stick PRO Duo, microSD and USB memory sticks are in preparation.

The High-Speed CopyStation is a **complete system** consisting of a pre-configured PC **containing one 5.25" drive**. The appropriate **Card-Boxes** can be ordered **separately**.

## Flexibility and mobility with the same system

Specifically developed for low-cost duplication of data onto a range of storage media is the **FlashCard CopyStation**. The system is available with up to **10 PC Card slots** and is compatible with PC Cards and all flash memory media for which a PC Card adapter is available.

This very flexible solution is also available as a **mobile version** as an external USB 2.0 drive **with 2 PC Card slots**. This allows you to create image copies of flash memory cards on site using a Notebook or a PC.



## altec Robo CopyStation

Portal robot for automatic handling and copying of memory cards; with contact pads for up to 48 SD Cards, MultiMediaCards, miniSD, RS-MMC or microSD; very high copying speed – e.g. 48 SD Cards with 64 MB in less than 60 seconds.



Robo CopyStation M1

29AL111

Robo CopyStation M2

29AL120

Item no.



## High-Speed CopyStation for SD/MMC, miniSD, RS-MMC, CF



Complete system consisting of a pre-configured PC with 5.25" copy module and removable CardBox; high-speed image copies to up to 20 memory cards parallel; CardBoxes for various types of mobile memory media, such as: SD Card & MMC, miniSD, RS-MMC, CompactFlash and OTP SD/MMC; Memory Stick PRO Duo, microSD and USB stick CardBoxes are in preparation; with software under WinXP Professional.

High-Speed CopyStation w/o CardBox

31AL144EB

CardBox for SD Card & MMC

31AL1371

CardBox for miniSD

31AL1581

CardBox for RS-MMC

31AL1561

CardBox for CompactFlash Card

31AL1571

CardBox for OTP SD/MMC up to 3,7 V

31AL159

CardBox for OTP SD/MMC up to 12 V

31AL160

Software OTP support

31AL1485

Software interface for exchanging data with external applications

31AL1486

Software Parallel Verification

31AL1487



## FlashCard CopyStation



Duplication of memory cards using PC Card drives; for all memory media which can be used with a PC Card Adapter; complete system consisting of a pre-configured PC, ten PC Card slots and software; mobile USB version with two PC Card slots for connecting to a Notebook or a PC.

FlashCard CopyStation with 10 slots

31AL136

FlashCard CopyStation Mobile USB with 2 slots

31AL170

PC Card Adapter for different memory cards

\*

\* Please ask!



## What are the advantages of Flash?

Instead of conventional mechanical rotating drives, Flash memory media use **Flash semi-conductors to store the data**. This leads to important benefits:

- ◆ insensitive to shock, vibration, temperature changes and moisture
- ◆ silent operation
- ◆ low current consumption
- ◆ no moving parts which can wear out
- ◆ the data is buffered without using a battery
- ◆ currently, a write and read speed of up to 6 or 8 MB/sec. with small data blocks, else of up to 60 MB/sec. is sustained.

## Advantages of SiliconDrive™ Flash memory cards

In the 2<sup>nd</sup> quarter 2005 altec has become the sole distributor in Germany for the SiliconDrive™ Industrial Grade memory solutions from **SiliconSystems**, a manufacturer **from the USA** who **focuses exclusively on industrial products** and who is the only industrial company to sign a Cross License Agreement with SanDisk.



The SiliconDrive™ product line comprises the PC Card, CompactFlash Card, 2.5" FlashDrive and the directly connecting 40-pin IDE Module. A **Single Level Cell (Binary)**

**NAND Flash** serves as memory. Along with the **RISC Controller** technology developed in house

by SiliconSystems it provides a high read and write speed even for small data blocks.

All SiliconDrive™ products have not only the most effective **6-bit error correction** algorithm on the market, but also the patent-pending **Wear-Leveling** system. Moreover, all products are provided with the patented **PowerArmor™** technology which prevents destruction of the card or drive when the write operation is suddenly interrupted, e.g. in case of a power failure.

The product line features a **high reliability** (MTBF >4 million hours), a **long lifetime** (>2 million write/erase cycles) and a very good shock resistance (1,000 G, half sine wave of 0,5 ms duration) and vibration resistance (16,3 G RMS), all tested to the MIL Standard 810F.



Besides the standard version for an operating temperature range of 0°C to +70°C **optional** versions are available for the extended industrial temperature range of **-40°C to +85°C**.

Optional technologies such as four different levels of safe data erasing up to physical destruction of the memory cells (SiSweep™, SiScrub™, SiPurge™, SiDestroy™), write protection (SiProtect™) and password protection (SiSecure™) extend the range of applications of these memory products.

Usually, SiliconDrive™ products are delivered with **DMA support** and as a **non-removable device**. Three other combinations are also available.

SiliconSystems guarantees long product lifecycles and is offering a **5-year warranty** on all products.

## Full Metal Cards for maximum reliability



We are offering **four versions** of our Full Metal Cards based on the SiliconDrive™ memory technology.

All versions are **mechanically very rugged** and – due to their full metal case – feature a high resistance to deformation and corrosion, dissipation of static charge, excellent EMC protection plus a high resistance to vibration and shock.

All IP54, IP68 and Military versions are dust and moisture proof and can be used in the industrial temperature range.

# PC Cards

## What are PCMCIA PC Cards?

The PCMCIA standard describes e.g. the physical dimensions, electrical specifications and the software architecture of PC Cards.

**Three case formats are defined.** The footprint of all three types is 54 x 85.6 mm and all of them use the same 68-pin connector. The Type II PC Cards available from us have a height of 5 mm.

**SILICON SYSTEMS SSD-Pxxx-3012:**

### SiliconDrive™ PC Card

ATA Flash memory PC Card Type II Industrial Grade, standard temperature range 0°C to +70°C (operating); 3.3V and 5V; more technical details see also page 12.



Item no.

32 MB SiliconDrive™ PC Card	20SS32
64 MB SiliconDrive™ PC Card	20SS64
128 MB SiliconDrive™ PC Card	20SS128
256 MB SiliconDrive™ PC Card	20SS256
512 MB SiliconDrive™ PC Card	20SS512
1.0 GB SiliconDrive™ PC Card	20SS1024
2.0 GB SiliconDrive™ PC Card	20SS2048
4.0 GB SiliconDrive™ PC Card	20SS4096
8.0 GB SiliconDrive™ PC Card	20SS8192
Version available for an extended industrial temperature range: -40°C to +85°C (operating)	20SSxxxI*

\* Please ask!

**altec** 13DLxxG/v.1:

### Full Metal Card 2<sup>nd</sup> Edition Solid



Item no.

**Solid:** ATA Flash memory PC Card Type II in rugged full metal case (V2A stainless steel), protection against EMC and ESD, corrosion proof, resistant to bending and compression stress; for a temperature range from 0°C to +70°C (operating); 3.3V and 5V; 5 years warranty.

32 MB Full Metal Card 2 <sup>nd</sup> Edition Solid	13DL32G
64 MB Full Metal Card 2 <sup>nd</sup> Edition Solid	13DL64G
128 MB Full Metal Card 2 <sup>nd</sup> Edition Solid	13DL128G
256 MB Full Metal Card 2 <sup>nd</sup> Edition Solid	13DL256G
512 MB Full Metal Card 2 <sup>nd</sup> Edition Solid	13DL512G
1.0 GB Full Metal Card 2 <sup>nd</sup> Edition Solid	13DL102G
2.0 GB Full Metal Card 2 <sup>nd</sup> Edition Solid	13DL204G
4.0 GB Full Metal Card 2 <sup>nd</sup> Edition Solid	13DL409G
8.0 GB Full Metal Card 2 <sup>nd</sup> Edition Solid	13DL819G

**Full Metal Card 2<sup>nd</sup> Edition IP54**



Item no.

**IP54:** V2A stainless steel case; dust proof due to a special connector; proof against water splashes; with extended temperature range from -40 °C to +85 °C (operating); 3.3V and 5 V; 5 years warranty.

32 MB Full Metal Card 2 <sup>nd</sup> Edition IP54	13DL32GP
64 MB Full Metal Card 2 <sup>nd</sup> Edition IP54	13DL64GP
128 MB Full Metal Card 2 <sup>nd</sup> Edition IP54	13DL128GP
256 MB Full Metal Card 2 <sup>nd</sup> Edition IP54	13DL256GP
512 MB Full Metal Card 2 <sup>nd</sup> Edition IP54	13DL512GP
1.0 GB Full Metal Card 2 <sup>nd</sup> Edition IP54	13DL102GP
2.0 GB Full Metal Card 2 <sup>nd</sup> Edition IP54	13DL204GP
4.0 GB Full Metal Card 2 <sup>nd</sup> Edition IP54	13DL409GP
8.0 GB Full Metal Card 2 <sup>nd</sup> Edition IP54	13DL819GP

**Full Metal Card 2<sup>nd</sup> Edition IP68**



**IP68:** like IP54, but dust proof and water proof to 1 meter immersion depth (non-operating); 3.3V, 5 V; 7 years warranty.

32 MB Full Metal Card 2 <sup>nd</sup> Edition IP68	13DL32G68
64 MB Full Metal Card 2 <sup>nd</sup> Edition IP68	13DL64G68
128 MB Full Metal Card 2 <sup>nd</sup> Edition IP68	13DL128G68
256 MB Full Metal Card 2 <sup>nd</sup> Edition IP68	13DL256G68
512 MB Full Metal Card 2 <sup>nd</sup> Edition IP68	13DL512G68
1.0 GB Full Metal Card 2 <sup>nd</sup> Edition IP68	13DL102G68
2.0 GB Full Metal Card 2 <sup>nd</sup> Edition IP68	13DL204G68
4.0 GB Full Metal Card 2 <sup>nd</sup> Edition IP68	13DL409G68
8.0 GB Full Metal Card 2 <sup>nd</sup> Edition IP68	13DL819G68

**Full Metal Card 2<sup>nd</sup> Edition Military**



Item no.

**Military:** Bronze alloy case (CuNi9SN<sub>2</sub>); suitable for aerospace; meets MIL specs for vacuum, vibration and shock (MIL-STD 202 F, Table 213-1/Test F, 310C); corrosion proof; fungus resistant; can be submerged to 30 m (non-operating), absolutely dust proof, with extended temperature range from -40 °C to +85 °C (operating); 3.3V and 5 V; 2 years warranty.

32 MB Full Metal Card 2 <sup>nd</sup> Edition Military	13DL32GM
64 MB Full Metal Card 2 <sup>nd</sup> Edition Military	13DL64GM
128 MB Full Metal Card 2 <sup>nd</sup> Edition Military	13DL128GM
256 MB Full Metal Card 2 <sup>nd</sup> Edition Military	13DL256GM
512 MB Full Metal Card 2 <sup>nd</sup> Edition Military	13DL512GM
1.0 GB Full Metal Card 2 <sup>nd</sup> Edition Military	13DL102GM
2.0 GB Full Metal Card 2 <sup>nd</sup> Edition Military	13DL204GM
4.0 GB Full Metal Card 2 <sup>nd</sup> Edition Military	13DL409GM
8.0 GB Full Metal Card 2 <sup>nd</sup> Edition Military	13DL819GM

**For all Full Metal Cards:**  
customer specific PC Card labels (minimum order quantity 1000 labels)

\* Please ask!

# CompactFlash Cards

## What are CompactFlash Cards?

The CompactFlash standard was **developed in 1994** by SanDisk. It uses the same flash technology as the ATA Flash PC Cards. With CompactFlash Cards, **data is transferred using the ATA protocol over 50 pins** instead of 68 pins as in the PC Cards.

The dimensions of CF Cards Type I offered by us are 36.4 x 42.8 x 3.3 mm. Microdrive mini hard disks and some high-capacity flash cards have a CF Card Type II form factor with a greater thickness (overall height of 5.0 instead of 3.3 mm).



**CompactFlash Cards** are now used in a very **wide range of devices**. In industry they are used e.g. as a boot medium or on-board memory expansion in industrial PCs, measuring equipment, single board computers or on other logic boards. In the commercial sector they are used in Pocket PCs, PDAs, MP3 players, digital dictating machines and in digital cameras.

A **PC Card adapter** allows **CompactFlash Cards** to be used in any PC Card Type II slot, such as that found in nearly all **notebook PCs** and all **altec Flash Card Drives**.

SILICON SYSTEMS SSD-Cxxx-3012:

## SiliconDrive™ CompactFlash Card



CompactFlash Card Industrial Grade. Dimensions: 36.4 x 42.8 x 3,3 mm, with 50-pin connector, ATA interface; standard temperature range 0°C to +70°C (operating); 3.3V and 5V; more technical details see page 12.

	Item no.
32 MB SiliconDrive™ CompactFlash	21SS32
64 MB SiliconDrive™ CompactFlash	21SS64
128 MB SiliconDrive™ CompactFlash	21SS128
256 MB SiliconDrive™ CompactFlash	21SS256
512 MB SiliconDrive™ CompactFlash	21SS512
1.0 GB SiliconDrive™ CompactFlash	21SS1024
2.0 GB SiliconDrive™ CompactFlash	21SS2048
4.0 GB SiliconDrive™ CompactFlash	21SS4096
Version available for an extended industrial temperature range: -40°C to +85°C (operating)	21SSxxxI*



## Adapter CompactFlash to PC Card Type II slot



Adapter for CompactFlash Cards Type I for use in a PC Card Type II slot.

altec CF Type I Adapter for PC Card Type II slot 20STI31

\* Please ask!

# Solid State Disks

## Mechanically insensitive storage solutions

As one of the pioneers of technically mature storage solutions, altec was **already** manufacturing bootable Silicon Disks **during the 80s**. In contrast to conventional hard disk drives, the data is stored on semi-conductor chips.



altec now manufactures a **wide range of Solid State Disks** with different formats and footprints, technologies, interfaces and storage capacities.

## What are Solid State Disks?

The common feature of all Solid State Disks is that the **data is stored on Flash chips**. Solid State Disks are **insensitive** to shock, vibration, temperature effects and extreme air pressure changes and are highly resistant to EMI and ESD.

Solid State Disks do not have sensitive rotating components. They are totally silent in operation and have a low current consumption. You can write, read and delete the data just **like a conventional hard disk**. Mechanical hard disks in mobile systems and industrial computers can be replaced by pin-compatible Solid State Disks.

In addition to complete drives, we manufacture adapters which can



be fitted with CompactFlash Cards to provide rugged storage solutions. The Solid State Disks are provided **with IDE, IDE UDMA-66, SATA or SCSI interfaces** and are available in the following formats: **1.3", 1.8", 2.5" and 3.5"**.

Top-level models from Memtech are providing a write and read speed of up to 60 MB/s (sustained) and memory capacities of far more than 100 GB.



## Full Metal Stick USB



Full metal USB 2.0 memory stick for tough environmental conditions with storage capacities from 128 MB to 1 GB; temperature range 0°C to +70°C, optional -40°C to +85°C (operating) and with protection class IP68; Windows ME, 2000, XP, Mac OS 9.x and OS X.

	Item no.
128 MB Full Metal Stick USB	25A128SS
256 MB Full Metal Stick USB	25A256SS
512 MB Full Metal Stick USB	25A512SS
1.0 GB Full Metal Stick USB	25A1024SS
Full Metal Stick USB IP68 i-Temp. (-40°C to +85°C)	25AxxxSIS



## CF-IDE (40-pin) Adapter for CompactFlash Type I

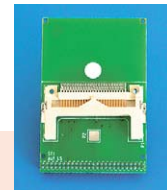


IDE Adapter to integrate CompactFlash Cards Type I; DMA-capable when using appropriate CompactFlash cards.

CF Type I to IDE with 40-pin male connector for standard IDE cable, DMA-capable	30AL2051
CF Type I to IDE with 40-pin female connector for piggy back connection to CPU/controller card, DMA	30AL2041



## 1.3"/1.8" CompactFlash Adapter for IDE (44-pin)



Adapter in 1.8" or 1.3" format with predefined rupture point on the board. IDE interface with 44-pin male connector, 2 mm grid; for CF Type I.

1.3"/1.8" CompactFlash Type I Adapter	30AL-206
---------------------------------------	----------



### 3.5" IDE DoubleDrive

Solid State Disk in 3.5" format for two CompactFlash Cards, Type I or II. Each CF Card behaves like a separate IDE FlashDisk. With locking catch to hold the card in place; optional extended temperature range; 40-pin IDE connector with 2.54 mm pin spacing; for all operating systems with IDE support.



3.5" IDE DoubleDrive

Item no.

35AL020



### 2.5" SCSI DoubleDrive

Solid State Disk in 2.5" format with two CF Cards Type I; high transfer rates through alternate addressing (RAID 0) of CF Cards; 50-pin SCSI-2 interface, 2 mm pin spacing, commercial temperature range 0°C to +70°C (operating), on request industrial temperature range -40°C to +85°C (operating); 5 V.



64 MB 2.5" SCSI DoubleDrive

30AL212

128 MB 2.5" SCSI DoubleDrive

30AL213

256 MB 2.5" SCSI DoubleDrive

30AL214

512 MB 2.5" SCSI DoubleDrive

30AL225

1.0 GB 2.5" SCSI DoubleDrive

30AL229

2.0 GB 2.5" SCSI DoubleDrive

30AL219

4.0 GB 2.5" SCSI DoubleDrive

30AL230



### 3.5" SCSI DoubleDrive

As 2.5" SCSI DoubleDrive, but in 3.5" format by insertion in an adapter; 50-pin SCSI-2 interface, 2.54 mm pin spacing.



3.5" Adapter for 2.5" SCSI DoubleDrive

30AL221



SSD-Mxxx-3012:

### SiliconDrive™ 40-pin Module



Industrial Grade Flash Memory Module with 40-pin IDE interface. Temperature range from 0°C to +70°C (operating); 3.3 V and 5V; DMA-capable; more technical details see page 12.

32 MB SiliconDrive™ 40-pin Module

31SS32

64 MB SiliconDrive™ 40-pin Module

31SS64

128 MB SiliconDrive™ 40-pin Module

31SS128

256 MB SiliconDrive™ 40-pin Module

31SS256

512 MB SiliconDrive™ 40-pin Module

31SS512

1.0 GB SiliconDrive™ 40-pin Module

31SS1024

2.0 GB SiliconDrive™ 40-pin Module

31SS2048

Version available for an extended industrial temperature range: -40°C to +85°C (operating)

31SSxxxI  
\*



SSD-Dxxx-3012:

### SiliconDrive™ 2.5" Drive



Industrial Grade Flash Drive in 2.5" format, 44-pin IDE interface. Temperature range from 0°C to +70°C (operating); 3.3 V and 5V; DMA-capable; more details see page 12.

32 MB SiliconDrive™ 2.5" Drive

28SS32

64 MB SiliconDrive™ 2.5" Drive

28SS64

128 MB SiliconDrive™ 2.5" Drive

28SS128

256 MB SiliconDrive™ 2.5" Drive

28SS256

512 MB SiliconDrive™ 2.5" Drive

28SS512

1.0 GB SiliconDrive™ 2.5" Drive

28SS1024

2.0 GB SiliconDrive™ 2.5" Drive

28SS2048

4.0 GB SiliconDrive™ 2.5" Drive

28SS4096

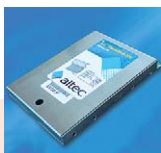
8.0 GB SiliconDrive™ 2.5" Drive

28SS8192

Version available for an extended industrial temperature range: -40°C to +85°C (operating)

28SSxxxI  
\*

\* Please ask!



## 2.5" FlashDisk IDE

FlashDrive as rugged replacement for IDE hard disk in standard 2.5" format. Overall height 9.3 mm, 44-pin IDE connector with 2 mm grid. Temperature range from 0°C to +70°C (operating), 3.3V and 5V, DMA-capable.

	Item no.
32 MB 2.5" FlashDisk IDE	25SSD31
64 MB 2.5" FlashDisk IDE	25SSD61
128 MB 2.5" FlashDisk IDE	25SSD121
256 MB 2.5" FlashDisk IDE	25SSD251
512 MB 2.5" FlashDisk IDE	25SSD5121
1.0 GB 2.5" FlashDisk IDE	25SSD1021
2.0 GB 2.5" FlashDisk IDE	25SSD2041
4.0 GB 2.5" FlashDisk IDE	25SSD4091

Version available for an extended industrial temperature range: -40°C to +85°C (operating)

\* Please ask!

## Memtech Solid State Drives

The Solid State Drives from Memtech (USA) are rugged and ultra reliable and offer an **8-year warranty**. High maximum capacities are available with an excellent price/performance ratio.

All drives are **optionally available** for an industrial temperature range: **-40°C to +85°C** (operating). The AT2550 & AT3550 Wolverine are also available for the military temperature range **-55°C to +125°C** (operating).

A **Wear-Leveling Algorithm** is implemented in all drives, as well as the **Kicker™ Hold Up Circuit** intended to prevent drive destruction if writing is suddenly interrupted.

Optionally, all products are available with a **Security Erase** feature and with a **Conformal Coating** to protect them against moisture.

In addition to the memory capacities shown here, we also offer other capacities. Please ask for further details.

## AT1830 Mustang:

### 1.8" IDE Solid State Drive

Ultra reliable Solid State Drive in 1.8" format. 44-pin IDE connector, 2 mm grid, 0°C to +70°C (operating); 5V.



	Item no.
256 MB AT1830 Mustang – 1.8" IDE	30MT256
512 MB AT1830 Mustang – 1.8" IDE	30MT512
1024 MB AT1830 Mustang – 1.8" IDE	30MT10
2048 MB AT1830 Mustang – 1.8" IDE	30MT20

## AT2515 Bulldog:

### 2.5" IDE Solid State Drive

Very reliable low cost Solid State Drive in 2.5" format with 1 GB maximum storage capacity. 44-pin IDE interface with 2 mm grid; 0°C to +70°C (operating); 5V.



128 MB AT2515 Bulldog – 2.5" IDE	36MT128
256 MB AT2515 Bulldog – 2.5" IDE	36MT256
512 MB AT2515 Bulldog – 2.5" IDE	36MT512
1024 MB AT2515 Bulldog – 2.5" IDE	36MT10

## AT2525 Booster Rocket:

### 2.5" IDE Solid State Drive

Solid State Drive in 2.5" format with 3 GB maximum storage capacity. 44-pin IDE connector with 2 mm grid, 0°C to +70°C (operating); 5V.



256 MB AT2525 Booster Rocket – 2.5" IDE	33MT256
512 MB AT2525 Booster Rocket – 2.5" IDE	33MT512
1024 MB AT2525 Booster Rocket – 2.5" IDE	33MT10
2048 MB AT2525 Booster Rocket – 2.5" IDE	33MT20
3072 MB AT2525 Booster Rocket – 2.5" IDE	33MT30



### AT2550 Wolverine:

## 2.5" IDE UDMA-66 Solid State Drive



Very fast, high-capacity solid state drive in 2.5" format. Top-of-the-range product with UDMA-66 interface, guaranteed 8 million write/erase cycles and cached write/read speeds of 20 or 26 MB/sec.; 44-pin IDE connector, 2 mm grid; normal temperature range 0°C to +70°C (operating), optional for industrial -40°C to +85°C or military temperature range -55°C to +125°C (operating), 5V.

	Item no.
1024 MB AT2550 Wolverine – 2.5" UDMA-66	35MT10
2048 MB AT2550 Wolverine – 2.5" UDMA-66	35MT20
4096 MB AT2550 Wolverine – 2.5" UDMA-66	35MT40
8192 MB AT2550 Wolverine – 2.5" UDMA-66	35MT81
16384 MB AT2550 Wolverine – 2.5" UDMA-66	35MT163
27904 MB AT2550 Wolverine – 2.5" UDMA-66	35MT279



### AT2560 Hornet:

## 2.5" IDE Solid State Drive



Very fast Solid State Flash Drive in 2.5" format. Maximum read and write performance of 14 respectively 12 MB/s (sustained); storage capacity up to 16 GB; 44-pin IDE connector with 2 mm grid; 0°C to +70°C (operating); 5V; DMA Mode-2 support.

	Item no.
512 MB AT2560 Hornet – 2.5" IDE	46MT512
1024 MB AT2560 Hornet – 2.5" IDE	46MT10
2048 MB AT2560 Hornet – 2.5" IDE	46MT20
4096 MB AT2560 Hornet – 2.5" IDE	46MT40
8192 MB AT2560 Hornet – 2.5" IDE	46MT81
12288 MB AT2560 Hornet – 2.5" IDE	46MT122
16384 MB AT2560 Hornet – 2.5" IDE	46MT163



### AT2580 Panther:

## 2.5" IDE UDMA-66 Solid State Drive



Solid State Drive in 2.5" format with up to 64 GB storage capacity. With 20, 30 or 40 MB/s sustained read and write performance; 44-pin UDMA-66 IDE interface, 2 mm grid; 9.5 mm low profile solution; 0°C to +70°C (operating); 5V.

	Item no.
4096 MB AT2582 Panther – 20 MB/s – 2.5" UDMA-66	10MT40
8192 MB AT2582 Panther – 20 MB/s – 2.5" UDMA-66	10MT81
16384 MB AT2582 Panther – 20 MB/s – 2.5" UDMA-66	10MT163
32768 MB AT2582 Panther – 20 MB/s – 2.5" UDMA-66	10MT327
65536 MB AT2582 Panther – 20 MB/s – 2.5" UDMA-66	10MT655
6144 MB AT2583 Panther – 30 MB/s – 2.5" UDMA-66	11MT61
12288 MB AT2583 Panther – 30 MB/s – 2.5" UDMA-66	11MT122
24576 MB AT2583 Panther – 30 MB/s – 2.5" UDMA-66	11MT245
8192 MB AT2584 Panther – 40 MB/s – 2.5" UDMA-66	12MT81
16384 MB AT2582 Panther – 40 MB/s – 2.5" UDMA-66	12MT163



### AT3515 Bulldog:

## 3.5" IDE Solid State Drive



Very reliable low cost Solid State Drive in 3.5" format with 1 GB maximum storage capacity. 40-pin IDE interface with 2.54 mm grid; 0°C to +70°C (operating); 5V.

	Item no.
128 MB AT3515 Bulldog – 3.5" IDE	40MT128
256 MB AT3515 Bulldog – 3.5" IDE	40MT256
512 MB AT3515 Bulldog – 3.5" IDE	40MT512
1024 MB AT3515 Bulldog – 3.5" IDE	40MT10



## AT3525 Booster Rocket: 3.5" IDE Solid State Drive



Solid State Drive in 3.5" format with 3 GB maximum storage capacity. 40-pin IDE connector with 2.54 mm grid, 0°C to +70°C (operating); 5 V.

	Item no.
256 MB AT3525 Booster Rocket – 3.5" IDE	38MT256
512 MB AT3525 Booster Rocket – 3.5" IDE	38MT512
1024 MB AT3525 Booster Rocket – 3.5" IDE	38MT10
2048 MB AT3525 Booster Rocket – 3.5" IDE	38MT20
3072 MB AT3525 Booster Rocket – 3.5" IDE	38MT30



## AT3550 Wolverine: 3.5" IDE UDMA-66 Solid State Drive



Very fast, high-capacity solid state drive in 3.5" format. Top-of-the-range product with UDMA-66 interface, guaranteed 8 million write/erase cycles and cached write/read speeds of 20 or 26 MB/sec.; 40-pin IDE connector, 2.54 mm grid; normal temperature range 0°C to +70°C (operating), optional for industrial –40°C to +85°C or military temperature range –55°C to +125°C (operating), 5 V.

2048 MB AT3550 Wolverine – 3.5" UDMA-66	45MT20
4096 MB AT3550 Wolverine – 3.5" UDMA-66	45MT40
8192 MB AT3550 Wolverine – 3.5" UDMA-66	45MT81
16384 MB AT3550 Wolverine – 3.5" UDMA-66	45MT163
32768 MB AT3550 Wolverine – 3.5" UDMA-66	45MT327
49152 MB AT3550 Wolverine – 3.5" UDMA-66	45MT491
61440 MB AT3550 Wolverine – 3.5" UDMA-66	45MT614



## SA2580 Panther: 2.5" SATA Solid State Drive



Solid State Drive in 2.5" format. 64 GB max. storage capacity; 20, 30 or 40 MB/s sustained read and write performance; 1.5 Gbit SATA interface; 9.5 mm low profile; 0°C to +70°C (operating); 5 V.

4096 MB SA2582 Panther – 20 MB/s – 2.5" SATA	20MT40
8192 MB SA2582 Panther – 20 MB/s – 2.5" SATA	20MT81
16384 MB SA2582 Panther – 20 MB/s – 2.5" SATA	20MT163
32768 MB SA2582 Panther – 20 MB/s – 2.5" SATA	20MT327
65536 MB SA2582 Panther – 20 MB/s – 2.5" SATA	20MT655
6144 MB SA2583 Panther – 30 MB/s – 2.5" SATA	21MT61
12288 MB SA2583 Panther – 30 MB/s – 2.5" SATA	21MT122
24576 MB SA2583 Panther – 30 MB/s – 2.5" SATA	21MT245
8192 MB SA2584 Panther – 40 MB/s – 2.5" SATA	22MT81
16384 MB SA2582 Panther – 40 MB/s – 2.5" SATA	22MT163



## SA3580 Panther: 3.5" SATA Solid State Drive



Solid State Drive in 3.5" format. 128 GB max. storage capacity; 20, 40, 50 or 60 MB/s sustained read/write performance; 1.5 Gbit SATA interface; 9.5 mm low profile; 0°C to +70°C (operating); 5 V.

12288 MB SA3582 Panther – 20 MB/s – 3.5" SATA	23MT122
49152 MB SA3582 Panther – 20 MB/s – 3.5" SATA	23MT491
131072 MB SA3582 Panther – 20 MB/s – 3.5" SATA	23MT1310
12288 MB SA3584 Panther – 40 MB/s – 3.5" SATA	24MT122
49152 MB SA3584 Panther – 40 MB/s – 3.5" SATA	24MT122
40960 MB SA3585 Panther – 50 MB/s – 3.5" SATA	25MT409
51200 MB SA3585 Panther – 50 MB/s – 3.5" SATA	25MT510
98304 MB SA3586 Panther – 60 MB/s – 3.5" SATA	26MT983



## SC2500 Stinger:

### 2.5" SCSI Solid State Drive

Solid State Drive in 2.5" format with 9 GB maximum storage capacity. 50-pin SCSI-2 male connector strip, 2 mm grid, 0°C to +70°C (operating); 5 V.



Item no.

512 MB SC2500 Stinger – 2.5" SCSI-2	52MT512
1024 MB SC2500 Stinger – 2.5" SCSI-2	52MT10
2048 MB SC2500 Stinger – 2.5" SCSI-2	52MT20
4096 MB SC2500 Stinger – 2.5" SCSI-2	52MT40
8192 MB SC2500 Stinger – 2.5" SCSI-2	52MT81
9216 MB SC2500 Stinger – 2.5" SCSI-2	52MT92



## SC3500 Sidewinder:

### 3.5" SCSI Solid State Drive

Solid State Drive in 3.5" format with 36 GB maximum storage capacity. 50-pin SCSI-2 male connector strip, 2 mm grid, 0°C to +70°C (operating); 5 V.



Item no.

512 MB SC3500 Sidewinder – 3.5" SCSI-2	57MT512
1024 MB SC3500 Sidewinder – 3.5" SCSI-2	57MT10
2048 MB SC3500 Sidewinder – 3.5" SCSI-2	57MT20
4096 MB SC3500 Sidewinder – 3.5" SCSI-2	57MT40
8192 MB SC3500 Sidewinder – 3.5" SCSI-2	57MT81
16384 MB SC3500 Sidewinder – 3.5" SCSI-2	57MT163
24576 MB SC3500 Sidewinder – 3.5" SCSI-2	57MT245
36864 MB SC3500 Sidewinder – 3.5" SCSI-2	57MT368

# Flash Card Drives

## Industrial drives for mobile storage media

Our Flash Card Drives are easily to retrofit and allow your system to support a wide range of **Flash Card storage media** and in some cases **I/O PC Cards** too such as WLAN, LAN, fax or modem cards.

### The right altec Flash Card Drive for any application gives you flexibility with integration and interfacing

Our industry-standard flash card drives are available in different types and versions to enable **integration into your system**:

- ◆ internal drive with a 3.5" chassis
- ◆ internal drive as a plug-in card
- ◆ external drive in a desktop case
- ◆ external drive to IP54 or IP65 specifications
- ◆ internal and external drive as rugged version with, for example, metal guide rails or for an extended temperature range.

A **wide range of standard interfaces** are available such as IDE, USB, SCSI, Centronics, RS232/V24 together with bus systems like PCI, PC/104 and ISA.

### Support for most popular operating systems

Depending on the model, our PC Card Drives are compatible with DOS, Windows 3.x, Windows 95/98 and ME, Windows NT, 2000 and XP right through to OS/2, Linux, Unix and Mac OS.

### Custom designs

As a specialized manufacturer of drives for flash memory media, we can develop custom products to meet your requirements. For example, we can develop special **drivers, software** and **firmware modifications**, drives as **rugged versions** or drives up to **IP68 specifications**. We can also manufacture our drives with **custom interfaces** or in **individual cases and/or front panel colors**.



## EasyLite CF & SD Drives: Flash Card Drives for IDE



Active Flash Card Drives (IDE) for CompactFlash Card (Type I + II) or SD Card & MMC in standard 3.5" case. 40-pin IDE connector; without driver: Windows 95/98, ME, 2000, XP; driver for Windows NT; bootable if it is supported by the BIOS of the host computer.

EasyLite CF Drive for IDE interface

22AL120G

EasyLite SD Drive for IDE interface

22AL122G

Optional temperature range from -40°C to +85°C;  
EasyLite CF Drive as rugged version

\*

## altec EasyDrive: PC Card Drive for IDE



PC Card drive with 3.5" standard internal drive dimensions. IDE interface; double slot for SRAM and ATA PC Cards (Type I, II or III) and Type III HDDs; 2 x Type II or 1 x Type III memory media; provided with optimized drivers for Win 95/98, ME, NT, 2000 and XP; also compatible with DOS, Windows 3.x, OS/2.

EasyDrive for IDE interface

22AL-101



## Rugged IDE Card Drive: PC Card Drive for IDE



Rugged PC Card Drive with high mechanical stability due to metal guide rails and compact design for rough conditions. 44-pin IDE interface; single slot for Type I, II or III SRAM and ATA Flash PC Card memory media; compatible with DOS, Windows 3.x, 95/98, ME, NT, 2000, XP and OS/2.

Rugged IDE Card Drive for IDE interface

22AL-104

Custom versions

\*

\* Please ask!



## altec ID Drive: PC Card Drive for SCSI-2 (external)



PC Card Drive in industrial-strength metal desktop case with SCSI-2 interface (50-pin, 8 bit). Single slot for SRAM and ATA Flash PC Cards (Type I, II or III); compatible with DOS, OS/2, Windows 95/98, ME, NT, 2000, XP, Linux, Unix, Mac OS; direct memory access (DMA), high speed data transfer – up to 10 MB/s (synchronous) or 5 MB/s (asynchronous).

ID Drive for SCSI-2 (external)

25AL120



## altec i-Drive: PC Card Drive for SCSI-2 (internal)



3.5" internal drive with SCSI-2 interface (50-pin, 8 bit). Double slot for SRAM and ATA Flash PC Cards, 2 x Type I or II or 1 x Type III; see ID Drive for other specs.

i-Drive for SCSI-2 (internal)

25AL101



## Rugged SCSI Drive IP65: PC Card Drive for SCSI-2



PC Card Drive in industrial-strength metal desktop case with SCSI-2 interface (8 bit); Single slot for SRAM and ATA Flash PC Cards (Type I, II or III); compatible with all operating systems with SCSI support; direct memory access (DMA).

Rugged SCSI Drive IP65 for SCSI-2 (external)

25AL118A



## USB MultiDrive 5 for USB 2.0 (internal/external)



Internal or external drive for all popular Flash memory cards.

USB 2.0 High speed interface; five different slots for ATA PC Cards, CF Type I + II, Smart Media, Multi-MediaCard or SD Card, Memory Stick; xD-Cards compatible by using appropriate adapter; compatible with all operating systems with USB support.

	Item no.
USB MultiDrive 5 for USB 2.0 internal	25AL140
USB MultiDrive 5 for USB 2.0 external grey	25AL142G
USB MultiDrive 5 for USB 2.0 external black	25AL142S
Custom versions	*

## altec USB ATA Drive: PC Card Drive for USB 1.1



PC Card Drive in industrial-strength rugged metal dektop case with USB 1.1 interface. Single Slot for ATA Flash PC Cards (Type I, II or III); optimized drivers for Windows 98, ME, 2000 and XP; optional versions with IP54 specifications or in individual colours or internal version available on request.

USB ATA Drive for USB 1.1 (external)	22AL115G
Custom versions	*

\* Please ask!

## altec PCI Drive II: PC Card Drive for PCI bus



3.5" internal PC Card Drive incl. PCI controller card. Double slot for 2 x Type II or 1 x Type III PC Card memory media and I/O PC Cards (WLAN, LAN, fax, modem). Windows 2000 SP3 and XP compatible using drivers contained in operating system; also for Windows NT with optional software.

PCI Drive II for PCI bus	22AL123
APSoft CardWare 7.0 for Windows NT 4.0	21AL13351

## altec PCI CardDrive: PC Card Drive as plug-in card for PCI bus



Double slot for 2 x Type II or 1 x Type III SRAM, PC Card memory media or I/O cards like WLAN, LAN, fax or modem cards. PCI CompactFlashDrive with single slot for 1 x CF Type I or II. Windows 2000 SP3 and XP compatible; also for Windows NT with optional software.

PCI CardDrive as plug-in card for PCI bus	35AL001
PCI CompactFlashDrive as plug-in card for PCI bus	35AL002
APSoft CardWare 7.0 for Windows NT 4.0	21AL13351

# Software

## Software for Flash Card Drives

	Item no.
<b>CardAccess:</b> Provides support for EasyDrive, Rugged IDE Card Drive and PC/104 Drive under DOS to access binary data on PC Cards which do not have a DOS file structure.	
◆ Evaluation software (license for max. 3 drives)	24AL-101
◆ Single license (only with additional Evaluation software)	24AL-102
◆ Company license (for unlimited drives)	24AL-103
<b>ATAMAINT:</b> DOS utility programm for testing, initialization, diagnosis and maintenance of PC Cards (e.g. SanDisk SDP3B-xx) and IDE FlashDrives (e.g. SanDisk SD25B-xx).	21AL-108
<b>APSoft CardWare:</b> PC Card software (Socket Services for all leading PC Card controllers, extensive Card Service support); compatible with all PC Cards which meet the PC Card standard.	
APSoft CardWare for DOS Rel. 2.5G	21AL-112
APSoft CardWare 7.0 for Windows NT 4.0	21AL13351

## Developers Toolkits

Developers toolkit for integration of DOS FAT 16 formatted memory cards into customer-specific systems; delivered as Ansi C source code.	
altec DOS Filesystem Toolkit	70065
altec ATA Developers Toolkit	70067
altec MMC Developers Toolkit	70123
altec SD Developers Toolkit	70177
Adaptations to customer-specific hardware environments on request	*

\* Please ask!

# SanDisk Consumer/OEM products

## Separate brochure for the SanDisk product line

A separate brochure details the entire range of SanDisk Consumer/OEM products.

The **product line comprises** all relevant **Flash memory cards**, from CompactFlash through SD Card to MultiMediaCard and the small variants like miniSD, microSD und RS-MMC. Besides these cards, the Memory Stick PRO Duo and the high-speed Ultra II series with CompactFlash and SD Card are available. In future, additional memory card series will extend our product range.



Seven different **USB memory sticks** featuring different dimensions, memory capacities, software add-ons and additional functions like a finger print sensor complete the SanDisk product line.

**Please order the brochure** or download the PDF file from our homepage.

The PC Card adapter listed below are available for the currently most popular memory card formats SD Card & MultiMediaCard.

## altec Adapter for SD Card & MultiMediaCard to PC Card Type II



Adapter for SD Cards or Multi-MediaCards for use in a PC Card Type II slot; pass through of security commands; tested under Windows CE, 95/98, ME, NT, 2000, XP and MacOS.

altec SD Card & MultiMediaCard Adapter for PC Card Type II slot

OEM label on request

\* Please ask!

Item no.

30AL210

\*

	Page		Page
1.3"/1.8" CF Adapter for IDE	21	CompactFlash Adapter to IDE	21
1.8" IDE Solid State Drive AT1830 Mustang	25	CompactFlash Adapter to PC Card slot	19
2.5" FlashDisk IDE	24	CopyStations	8–9
2.5" Drive SiliconDrive™	23	Custom developments	11
2.5" IDE Solid State Drive AT2515 Bulldog	25	EasyDrive IDE	32
2.5" IDE Solid State Drive AT2525 Booster Rocket	25	EasyLite CF Drive	32
2.5" IDE Solid State Drive AT2550 Wolverine	26	EasyLite SD Drive	32
2.5" IDE Solid State Drive AT2560 Hornet	26	FlashCard CopyStation	9
2.5" IDE Solid State Drive AT2580 Panther	27	Flash Card Drives	32–35
2.5" SATA Solid State Drive SA2580 Panther	29	Full Metal Card Solid	15
2.5" SCSI DoubleDrive	22	Full Metal Card IP54	16
2.5" SCSI Solid State Drive SC2500 Stinger	30	Full Metal Card IP68	16
3.5" IDE DoubleDrive	22	Full Metal Card Military	17
3.5" IDE Solid State Drive AT3515 Bulldog	27	Full Metal Stick USB	21
3.5" IDE Solid State Drive AT3525 Booster Rocket	28	High-Speed CopyStation	9
3.5" IDE Solid State Drive AT3550 Wolverine	28	i-Drive SCSI	33
3.5" SATA Solid State Drive SA3580 Panther	29	ID Drive SCSI	33
3.5" SCSI DoubleDrive	22	IDE products	21–28,32
3.5" SCSI Solid State Drive SC3500 Sidewinder	30	Memory card services	10
40-pin Module SiliconDrive™	23	Memtech products	25–30
Adapter CompactFlash to IDE	21	PC Card SiliconDrive™	14
Adapter CompactFlash to PC Card slot	19	PCI CardDrive	35
Adapter SD Card & Multi-MediaCard to PC Card slot	37	PCI Drive II	35
CF-IDE Adapter	21	Robo CopyStation	8
CompactFlash Card SiliconDrive™	19	Rugged IDE Card Drive	32
		Rugged SCSI Drive IP65	33
		SanDisk products	37
		SATA products	29
		SCSI products	22,30,33
		SD Card & MultiMediaCard Adapter to PC Card slot	37
		SiliconDrive™ products	14,19,23
		Software	36
		Solid State Disks	21–30
		USB ATA Drive	34
		USB MultiDrive 5	34
		USB products	9,21,34

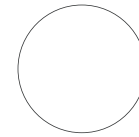
## Instructions

Before you can view the documents on this CD, the «**Adobe Reader**» software **must be installed** on your computer. There is a link on this CD for downloading the latest Adobe Reader for your operating system.  
**Open the file «Start.pdf»** by double-clicking its icon to get an overview of all types of documents on this CD.

### System information

CD-ROM format: ISO 9660

Documents format: PDF



Includes link for downloading Adobe Reader.

No software will be automatically installed on your PC by using this CD.

